

INTRODUCING

Chiswell Court, Watford WD24 7PL

2 Bedroom Flat - Purpose Built for sale

£275,000

Price

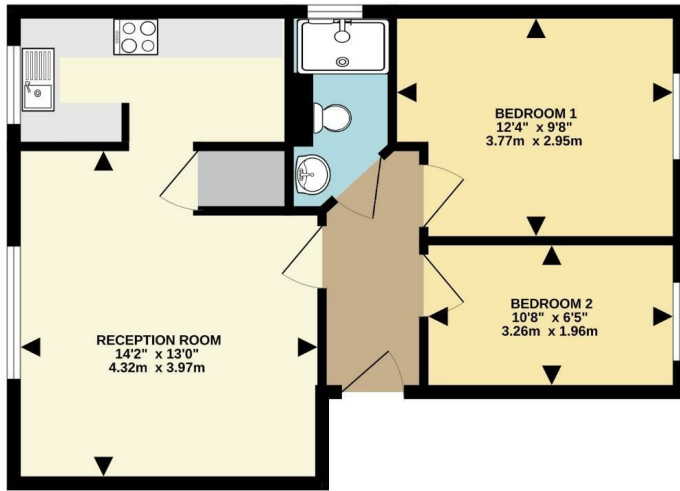


2 Bedrooms/1 Bathrooms EPC Rating: C

- Immaculate First Floor Apartment
- Lounge/Diner
- 2 Bedrooms
- Council Tax Band C
- Replacement Double Glazing
- Lease To Be Extended By Current Owner
- Re-fitted Kitchen
- Re-fitted Shower Room
- Well Kept Communal Gardens
- Allocated Parking

Floor Plan

498 sq.ft. (46.3 sq.m.) approx.



Map



Energy Efficiency

| Energy Efficiency Rating | | Current | Potential |
|---|--|-------------------------|-----------|
| Very energy efficient - lower running costs | | | |
| (92 plus) A | | | |
| (81-91) B | | | |
| (69-80) C | | 69 | 76 |
| (55-68) D | | | |
| (39-54) E | | | |
| (21-38) F | | | |
| (1-20) G | | | |
| Not energy efficient - higher running costs | | | |
| England & Wales | | EU Directive 2002/91/EC | |



These particulars, whilst believed to be accurate are set out as a general outline only for guidance and do not constitute any part of an offer or contract. Intending purchasers should not rely on them as statements of representation of fact, but must satisfy themselves by inspection or otherwise as to their accuracy. No person in this firm's employment has the authority to make or give any representation or warranty in respect of the property.